

KAPSPETS CLASSIC BATH TUB





CLASSIC BATH TUB

KAPSPETS.AAA



Kaps Classic Bath Tub With Sliding Door

Effortless Bathing | Superior Comfort | Professional-Grade Design

Designed for professional groomers and pet owners alike, our Classic bath tub ensures a stress-free and efficient bathing experience for dogs of all sizes. With its ergonomic design and advanced features, bathing your dog has never been easier or more enjoyable.

- The Staircase Ramp effortlessly swings under tub for storage (Swing in & Swing Out Staircase)
- Proudly 'Made in India' with high-quality, locally sourced materials
- Static - fixed height with ladder.
- The backsplash features U shaped hooks for shower heads to rest.
- The dog Bathing tub has an easy-to-use sliding door design.
- Stainless steel drainage And hair strainer
- Faucet with hose for cold and hot water
- Two Plastic floor grate panel - to keep pets above suds, and dirty water.
- Stainless steel Rack Soap and shampoo storage areas
- Puppy Booster - Stainless steel frame border adding platforms - help to raise toy breeds.
- Hot and Cold Water Shower: Integrated shower system with outlet faucets for both hot and cold water.
- Upper structure of bath tub body are screw connected and can be unlock bathtub upper chassis.

Materials: Premium Grade 304 stainless steel and will remain rust-free.
Includes - Mixer faucet with hand shower sprayer - 1No. / Hot and Cold water hoses - 1No. / Sprayer - 1 No. / Drain kit with flexible hose - 1 No. / Stainless steel Rack - 1No.

Requirements: Machine needs Water supply [Hot&cold] and drain provision.

Dimensions: 50L x 27W x 41H inches
Max Load: 100 kg



PRODUCT CODE
KAP045KCBT



FOLLOW US



@KAPSPETSGROOMING



@KAPSPETS GROOMING EQUIPMENTS



kapspetstrader@gmail.com

www.kapspetsgrooming.com



Free Delivery in Mumbai



Shipping Across India

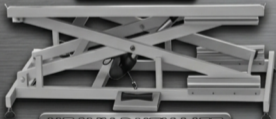


No Returns & Exchanges

STAINLESS STEEL 304

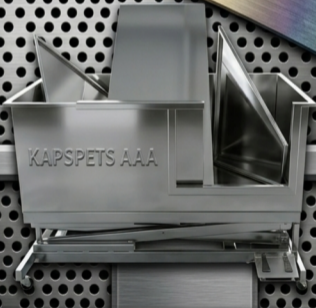


DEEP TUB



HEAVY DUTY LIFT

NUT & BOLT DISMANTABLE
BASE DESIGN



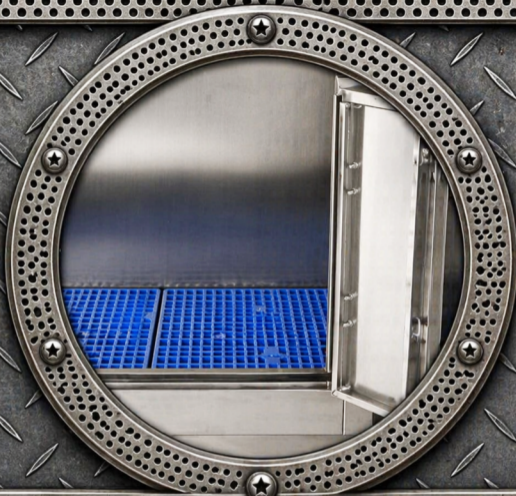
MODULAR • DURABLE • HYGIENIC • ADJUSTABLE



Non-skid



Detachable

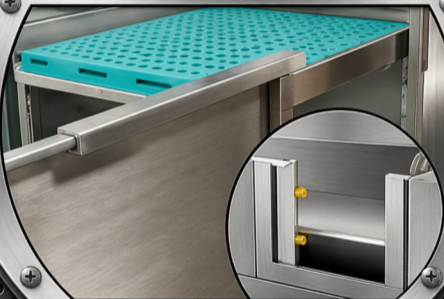


No Soak

FLOOR GRATE

(Detachable / Non-Skid & No Soak)

PUPPY BOOSTER & SLIDING DOOR PANEL



PUPPY BOOSTER & SLIDING DOOR PANEL



MOVABLE STAIRCASE

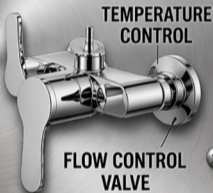
DELUXE SPRAYER & FAUCET SYSTEM

PREMIUM MULTI-
FUNCTION SPRAYER



SPRAY PATTERN:
MIST, CONE,
MIST, CONE,
SHOWER

THERMOSTATIC
FAUCET



TEMPERATURE
CONTROL

FLOW CONTROL
VALVE



DELUXE SPRAYER & FAUCET SYSTEM



FAUCET CONNECTOR HOUSE



DRAIN STRAINER



REMOVABLE HOOK

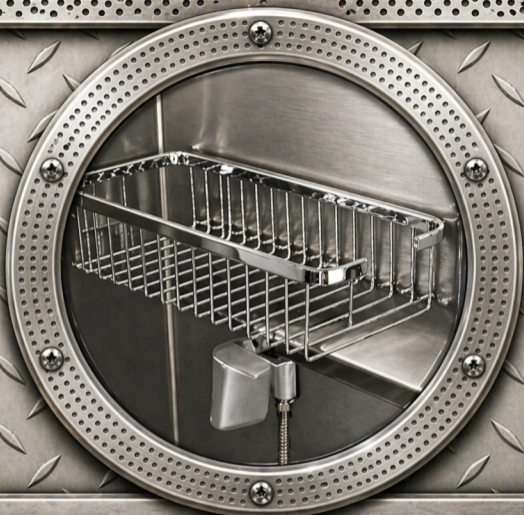
(Elevated Overhead Grooming Arm)



HIGH-PRESSURE DRAIN PIPE ASSEMBLY



ADJUSTABLE RUBBER FEET



SHAMPOO RACK



The primary technical difference between 202 and 304 stainless steel sheets is their composition, 202 stainless steel typically contains around 16-18% chromium, 4-6% nickel, 0.5-2% manganese, and less than 0.15% carbon, 304 stainless steel typically contains around 18-20% chromium, 8-10.5% nickel, 2% manganese, and less than 0.08% carbon. This makes 304 stainless steel more resistant to corrosion and staining than 202 stainless steel.



The higher nickel content in 304 stainless steel also makes it more ductile and stronger than 202 stainless steel, which can lead to better formability and easier fabrication. However, the higher nickel content also makes 304 stainless steel more expensive than 202 stainless steel.



Drawbacks of 202 stainless steel include its lower corrosion resistance compared to 304 stainless steel, as well as its lower strength and ductility. This can make it more prone to cracking and breaking under stress or high temperatures. Drawbacks of 304 stainless steel include its higher cost.



Kapspets Pet Grooming



10

FULL SET OF ACCESSORY CLASSIC DOG BATH TUB

SPRAYER & FAUCET

High-pressure Sprayer

Adjustable Temp. Faucet

FLOOR GRATE

Detachable Non-skid No Soak

FAUCET HOT AND COLD WATER HOSE

Sliding Door

Stainless Steel
Puppy Booster

Adj. Rubber Feet

Drain Pipe

Foldable Ramp

Shampoo Rack