

KAPSPETS HYDRAULIC BATH TUB





Kaps Hydraulic Bath Tub

Kaps Electric Dog Bathing Tub With Sliding Door

Effortless Bathing | Superior Comfort | Professional-Grade Design

Upgrade Your Grooming Experience with Our Hydraulic Bath Table!

Designed for professional groomers and pet owners alike, our hydraulic bath table ensures a stress-free and efficient bathing experience for dogs of all sizes. With its ergonomic design and advanced features, bathing your dog has never been easier or more enjoyable.

- Proudly 'Made in India' with high-quality, locally sourced materials
- Streamline your bathing process with easy-to-use hydraulic controls and Control pedals for the electric lifting.
- Extensive lifting range adjusts from 10" to 40".
- The gentle movement up/down does not startle pets.
- Built-In Drainage System with Hair Trap: Efficient water drainage for a mess-free bathing experience.
- The backslak features U shaped hooks for shower heads to rest.
- The dog Bathing tub has an easy-to-use sliding door design.
- Stainless steel drainage And hair strainer.
- Stainless steel Rack Soap and shampoo storage areas
- Faucet with hose for cold and hot water
- Hot and Cold Water Shower: Integrated shower system with outlet faucets for both hot and cold water.
- Two Plastic floor grate panel - to keep pets above suds, and dirty water.
- Puppy Booster - Stainless steel frame border adding platforms - help to raise toy breeds.
- Upper structure of bath tub body are screw connected and can be unlock bathtub upper chassis.
- Innovative X-style frame is stable, powerful and quiet.

Materials : Premium Grade 304 stainless steel and will remain rust-free and lower chassis MS with powder coated.

Includes - Mixer faucet with hand shower sprayer - 1No. / Hot and Cold water hoses - 1No. / Sprayer - 1 No. / Drain kit with flexible hose - 1No. / Stainless steel Shampoo Rack - 1No. / Puppy Booster Stand - 1No.

Requirements: Machine needs Water supply [Hot&cold] and drain provision.

Dimensions : 50L x 27W x 41H inches


Max Load : 100 kg




FOLLOW US



 @KAPSPETSGROOMING

 @KAPSPETS GROOMING EQUIPMENTS

 kapppestrader@gmail.com

www.kapspetsgrooming.com



Free Delivery in Mumbai



Shipping Across India



No Returns & Exchanges

X-Frame Design Hydraulic Jack



Structure: The X-frame design uses a scissor-like mechanism (an "X" shape) to lift 20–30% to handle dynamic loads. Provides rigidity and support the weight of dogs (10-kg capacity).



Standard Thickness: Kaps hydraulic dog grooming tables



Stability: Generally provides excellent stability due to the wide and even weight distribution.



Adjustability: Offers smooth height adjustment, make easy to raise or lower table desired height.



Durability: Known for being robust and long-lasting, especially made with high-quality materials.



Ease of Use: Typically supports higher weight capacities, man need to manual systems.



Weight Capacity: Usually support for larger dogs or heavy-duty use.



Thickness of 304 stainless steel



Dog Bathtubs - Surface Finish



Kapspets Pet Grooming

STAINLESS STEEL 304



DEEP TUB



HEAVY DUTY LIFT

NUT & BOLT DISMANTABLE
BASE DESIGN



MODULAR • DURABLE • HYGIENIC • ADJUSTABLE

MS vs GI

UNDERSTAND THE DIFFERENCE. CHOOSE THE BEST.

MS (Mild Steel) and GI (Galvanized Iron) are both widely used in various applications, but they differ in composition, properties, and performance.

MS (MILD STEEL)



COMPOSITION

Made of iron and carbon.
No protective coating.



CORROSION RESISTANCE

Low resistance to corrosion.
Prone to rust when exposed to moisture.



STRENGTH & DURABILITY

High strength and durability.
Suitable for heavy load applications.



SURFACE FINISH

Plain surface. Requires painting or coating for protection and better appearance.



MAINTENANCE

Requires regular maintenance to prevent rust and corrosion.



COST

Generally lower initial cost compared to GI.



APPLICATIONS

Used in structural applications, machinery, automotive parts, and general engineering.

KEY DIFFERENCES



COMPOSITION



CORROSION RESISTANCE



STRENGTH & DURABILITY



SURFACE FINISH



MAINTENANCE



COST



APPLICATIONS

GI (GALVANIZED IRON)



COMPOSITION

Mild steel coated with a layer of zinc.



CORROSION RESISTANCE

High resistance to corrosion due to zinc coating.



STRENGTH & DURABILITY

Good strength with added protection. Suitable for outdoor use.



SURFACE FINISH

Smooth, shiny zinc-coated surface. No need for painting.



MAINTENANCE

Low maintenance. Longer life with minimal care.



COST

Slightly higher initial cost than MS.



APPLICATIONS

Used in roofing, fencing, pipes, automotive, appliances, and outdoor structures.

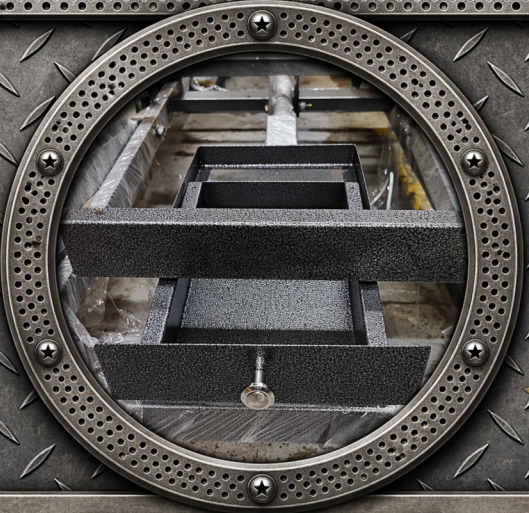
QUICK SUMMARY

Choose MS for strength and affordability in indoor or dry environments.
Choose GI for corrosion resistance and durability in outdoor or moist conditions.



POWDER COATED

(Antique - Silver / Gold & Copper)



TOOL BOX



ACTUATOR & FOOT CONTROL PEDALS



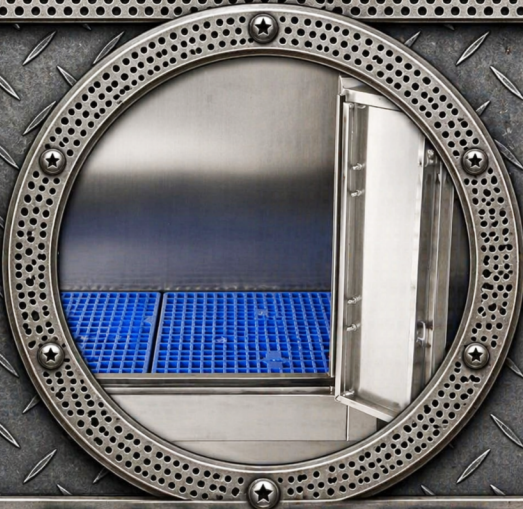
SOCKET CONSOLE



Non-skid



Detachable

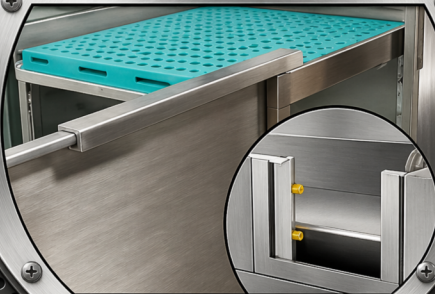


No Soak

FLOOR GRATE

(Detachable / Non-Skid & No Soak)

PUPPY BOOSTER & SLIDING DOOR PANEL



PUPPY BOOSTER & SLIDING DOOR PANEL

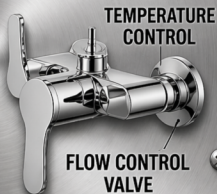
DELUXE SPRAYER & FAUCET SYSTEM

PREMIUM MULTI-
FUNCTION SPRAYER



SPRAY PATTERN:
MIST, CONE,
MIST, CONE,
SHOWER

THERMOSTATIC
FAUCET



TEMPERATURE
CONTROL

FLOW CONTROL
VALVE



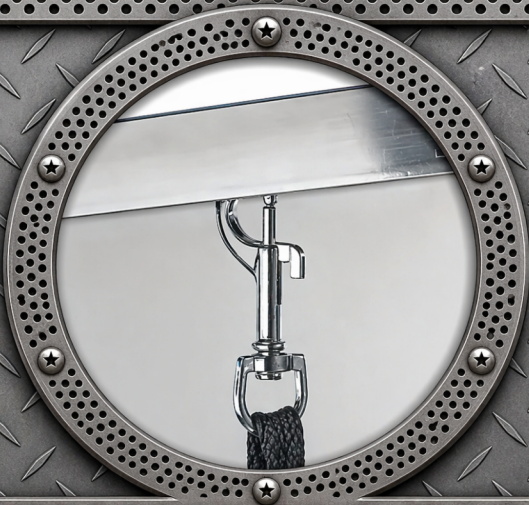
DELUXE SPRAYER & FAUCET SYSTEM



FAUCET CONNECTOR HOUSE



SHAMPOO RACK



REMOVABLE HOOK

(Elevated Overhead Grooming Arm)



DRAIN STRAINER



HIGH-PRESSURE DRAIN PIPE ASSEMBLY



ADJUSTABLE RUBBER FEET



The primary technical difference between 202 and 304 stainless steel sheets is their composition. 202 stainless steel typically contains around 16-18% chromium, 4-6% nickel, 0.5-2% manganese, and less than 0.15% carbon. 304 stainless steel typically contains around 18-20% chromium, 8-10.5% nickel, 2% manganese, and less than 0.08% carbon. This makes 304 stainless steel more resistant to corrosion and staining than 202 stainless steel.



The higher nickel content in 304 stainless steel also makes it more ductile and stronger than 202 stainless steel, which can lead to better formability and easier fabrication. However, the higher nickel content also makes 304 stainless steel more expensive than 202 stainless steel.



Drawbacks of 202 stainless steel include its lower corrosion resistance compared to 304 stainless steel, as well as its lower strength and ductility. This can make it more prone to cracking and breaking under stress or high temperatures. Drawbacks of 304 stainless steel include its higher cost.



Kapspets Pet Grooming



14

FULL SET OF ACCESSORY ELECTRIC DOG BATH TUB

SPRAYER & FAUCET High-pressure Sprayer

Adjustable Temp. Faucet

FLOOR GRATE

Detachable Non-skid No Soak

FAUCET HOT AND COLD WATER HOSE

Adj. Rubber Feet Sliding Door

Stainless Steel
Puppy Booster

REMOVABLE HOOK

Tool Storage

Drain Pipe

ELECTRIC
ACTUATOR

X-Frame Ramp

FOOT CONTROL PEDALS Shampoo Rack

